



1. CUT ME

LANDSCAPES MISTY WOODS



HOW TO SHOOT... LANDSCAPES

Digital
Camera

3. KEEP ME!

MISTY WOODS

KIT CHECKLIST...

28-200mm lens, tripod, ND filters

FOR YOUR FIRST SHOT, TRY...



TIPS FOR GETTING A GREAT SHOT...

- Get to the woods at daybreak as the sun comes up and shines through the early morning mist. Face into it.
- If the sun is burning through, use your tripod and try some bracketed shots (+/- 1EV) that can be merged later.

Getty



Use woodland paths to lead the eye through the scene towards the light source.

ACTION KAYAKING



HOW TO SHOOT... ACTION

Digital
Camera

KAYAKING

KIT CHECKLIST...

200-600mm focal length lens

FOR YOUR FIRST SHOT, TRY...



TIPS FOR GETTING A GREAT SHOT...

- Scout the location for the event before it starts. Look for spectacular drops that will make great photos.
- Either shoot straight on to capture expressions or compose at an angle for a more dynamic result.

Getty



Use focus tracking and a fast shutter speed to freeze the water spray as the kayak powers along.

GET CREATIVE DREAMY FLOWERS



HOW TO SHOOT... GET CREATIVE

Digital
Camera

DREAMY FLOWERS

KIT CHECKLIST...

24-70mm lens, tripod, ND filter

FOR YOUR FIRST SHOT, TRY...



TIPS FOR GETTING A GREAT SHOT...

- Arrange your flowers either flat on white paper or in a bowl and place the camera above them.
- Set the camera to multiple exposures with Screen blend mode. Shoot at various focus points.

Wendy Evans

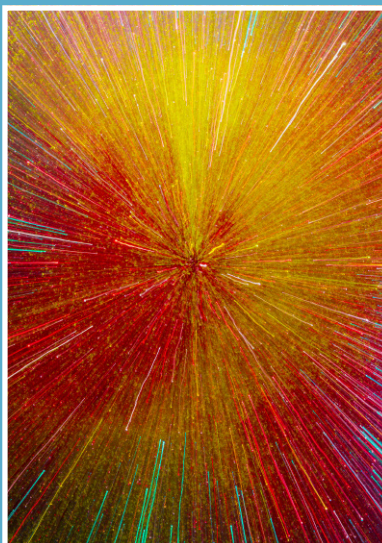


Move the camera during one of the exposures to create additional blurred elements.



1. CUT ME

GET CREATIVE COLOUR BURST



2. FOLD ME

HOW TO SHOOT... GET CREATIVE

Digital
Camera

3. KEEP ME!

COLOUR BURST

Create a dramatic colour explosion effect, all from your own kitchen or workroom.

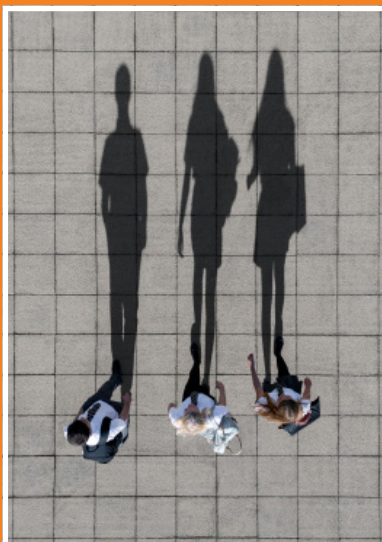
- **Make it glittery**
Get a piece of silver glitter card and sprinkle neon yellow and red glitter on top of that. Shine a white light on it.
- **Set up the camera**
Use a short telephoto – here, we used an 18-55mm. Set the aperture to f/16, resulting in a shutter speed of 1.3 secs.
- **Fire and zoom**
Position the camera parallel to the card. Fire the shutter and rotate the lens barrel to zoom out during the exposure.

Sarah Gibbons



If your torch is quite bright, use a narrower aperture. Try coloured cellophane to get more colours.

DRONE PEOPLE SHADOWS



HOW TO SHOOT... DRONE

Digital
Camera

PEOPLE SHADOWS

Use your drone in the morning or afternoon sun to create interesting perspectives.

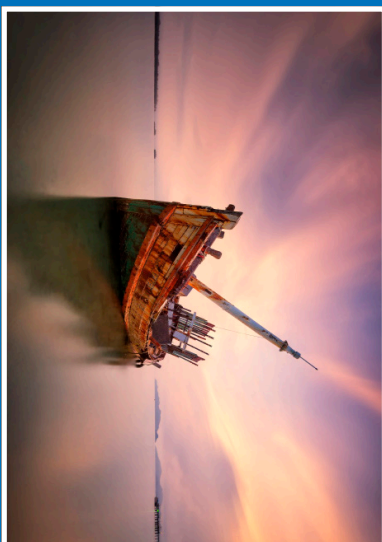
- **Hover above the people**
Place the drone over a group of people parallel to the ground on a sunny day, so that there are long shadows.
- **Time it right**
If you get the time of day right, the shadows will be the same aspect ratio as an actual person.
- **The resulting image**
The shadows appear to be people, but as silhouettes against the background. Have the drone focus on the ground.

Getty



The idea here is to make the shadows look like people and the people look like shadows.

CAMERA KNOW-HOW LONG EXPOSURES



HOW TO SHOOT... CAMERA KNOW-HOW

Digital
Camera

LONG EXPOSURES

KIT CHECKLIST...
16-35mm wide-angle lens, tripod, filters
FOR YOUR FIRST SHOT, TRY...



TIPS FOR GETTING A GREAT SHOT...

- Smooth out the water surrounding a shipwreck at dawn with an exposure of 30 secs. Use ND filters to help.
- Focus on the shipwreck itself. Use bracketing and merge the results for detail in the sky and the ship.

Getty

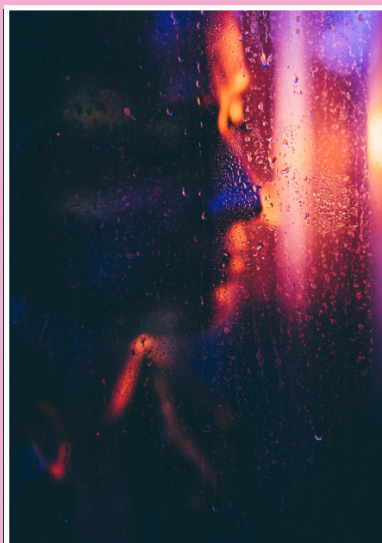


A 16mm focal length and f/6.3 aperture will ensure enough depth of field across the ship.



1. CUT ME

PORTRAITS THROUGH GLASS



2. FOLD ME

HOW TO SHOOT... PORTRAITS

Digital
Camera

3. KEEP ME!

THROUGH GLASS

KIT CHECKLIST...

50mm or 85mm prime lens, polariser

FOR YOUR SHOTS, TRY...



TIPS FOR GETTING A GREAT SHOT...

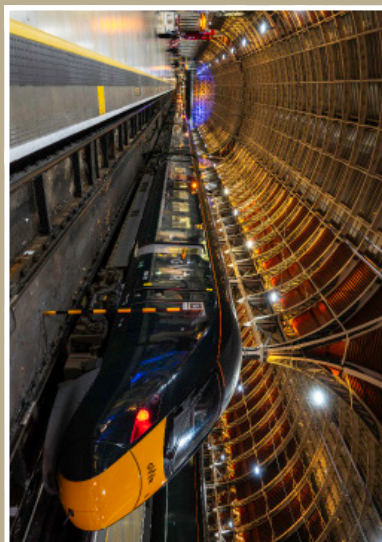
- Shoot at night after it has been raining. Look for cafés, bars, buses or any place where people sit near the windows.
- Use manual focus to either focus on the window with rainwater, or through it to the person on the other side. Try both!

Getty



A circular polariser can cut out unwanted reflections on the glass, enabling you to shoot through it.

URBAN TRAIN STATIONS



HOW TO SHOOT... URBAN

Digital
Camera

TRAIN STATIONS

From architecture to shiny, high-speed trains, there's plenty to photograph.

- **Use a wide-angle lens...**
To get more in the frame, and a greater depth of field. Use f/5.6 or f/6.3 and focus a few metres into the scene.
- **Find a resting point**
Light levels will be low, so find a place to rest the camera and use a slower shutter speed. Here, we used 1/8 sec.
- **Bump the ISO**
If the shutter speed is too slow for the way you are holding the camera, bump the ISO to get a minimum usable speed.

Wendy Evans



Bright highlights might be a problem in stations, so take care where you are metering from.

ACTION RUNNING DOGS



HOW TO SHOOT... ACTION

Digital
Camera

RUNNING DOGS

KIT CHECKLIST...

70-200mm lens, dog handler

FOR YOUR FIRST SHOT, TRY...



TIPS FOR GETTING A GREAT SHOT...

- Sit your dog at the end of a path, then call it to come to you. Focus manually and pre-focus at a specific point.
- Or use continuous focusing/animal tracking and shoot plenty of images as the dog runs towards you.

Getty



Whichever way you approach this, use continuous shooting so that you get a burst of images.